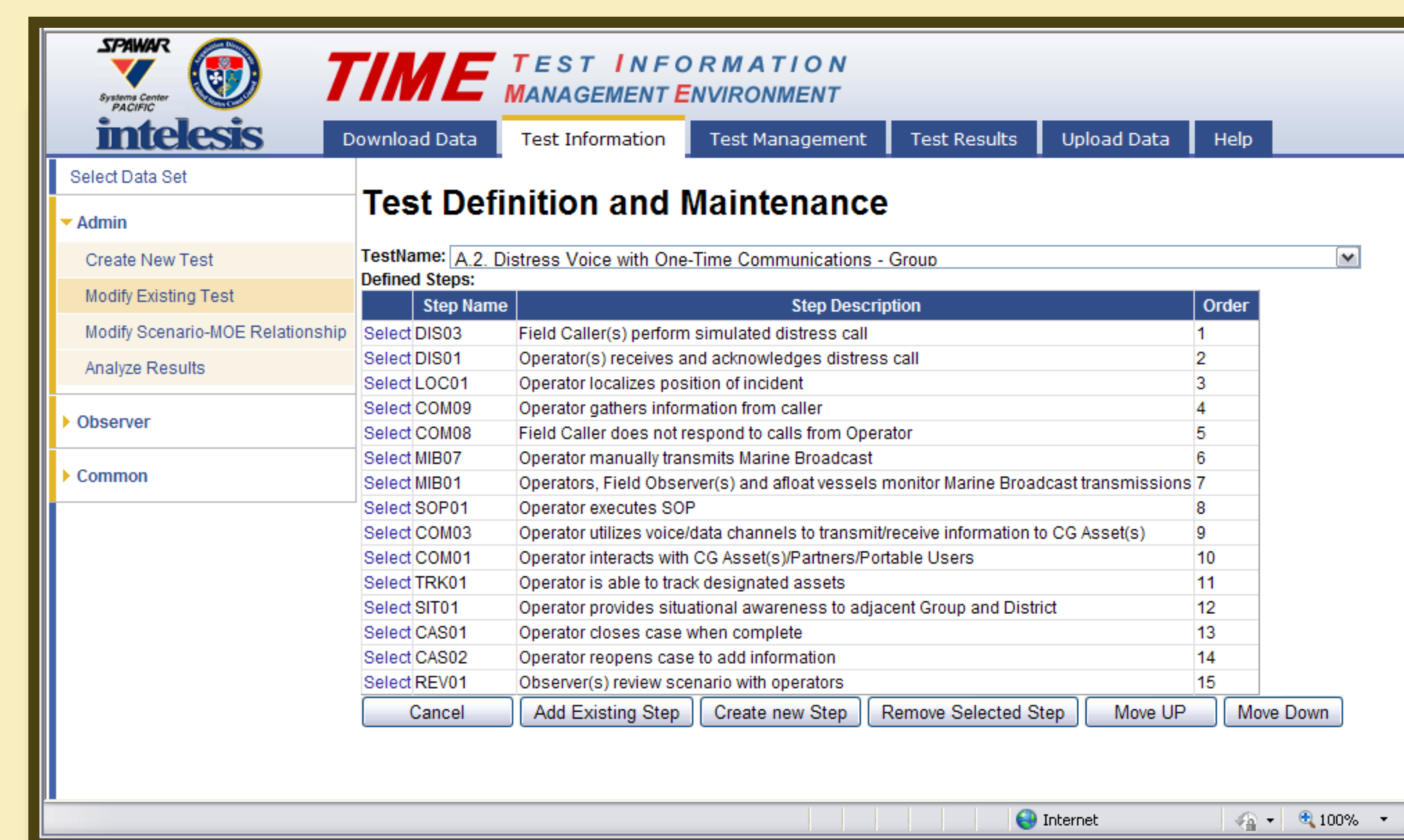
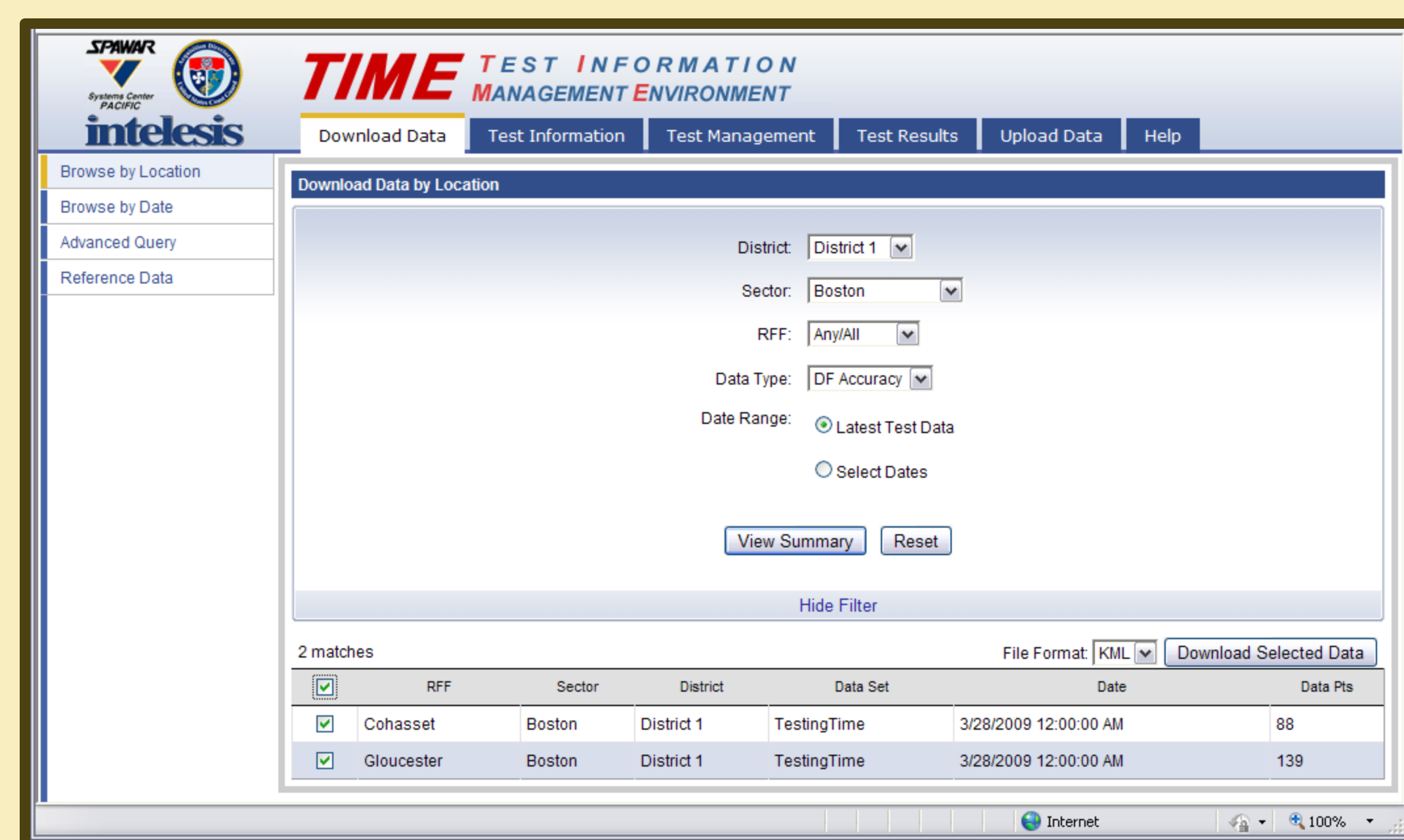


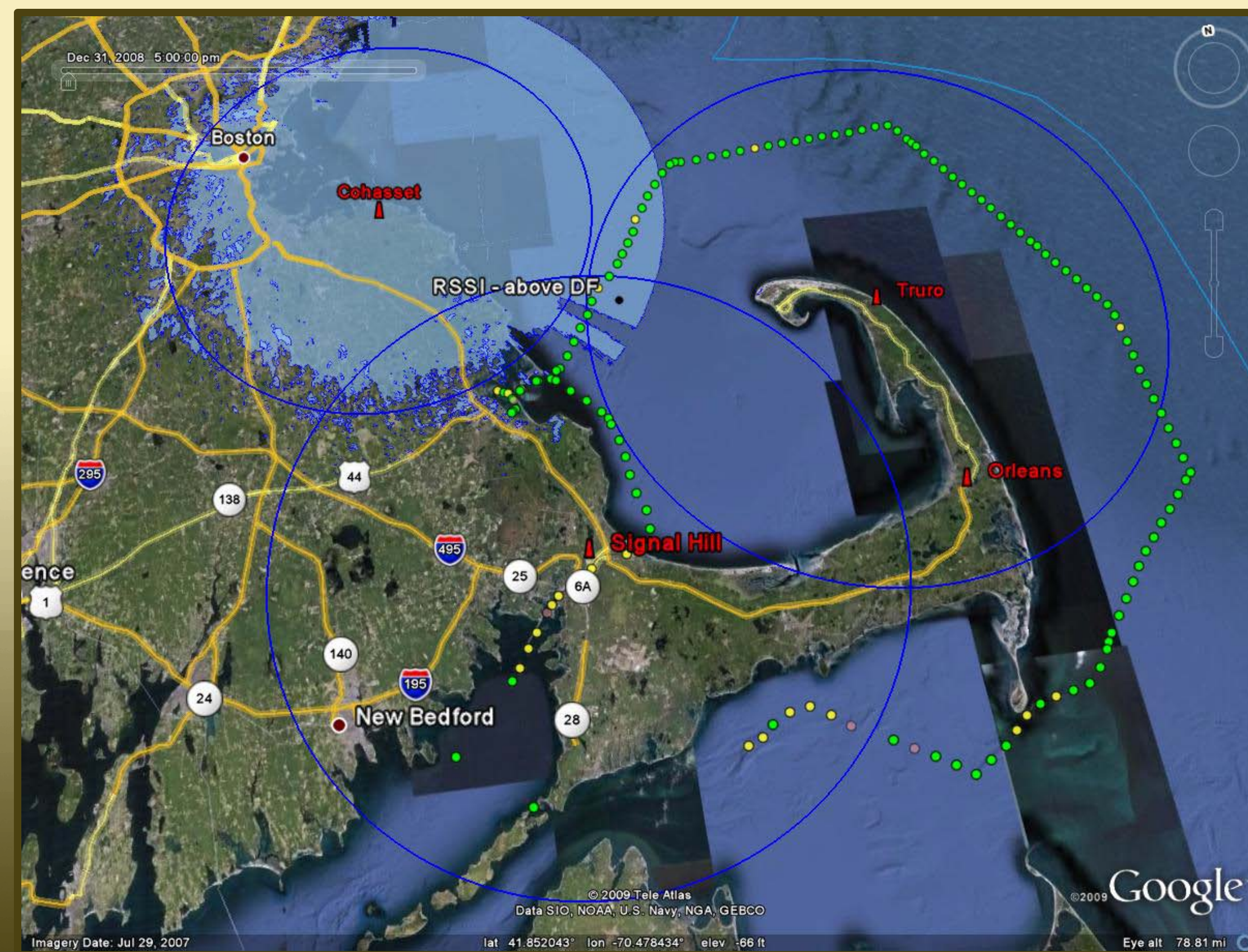


Download Data Tab – Browse by Location

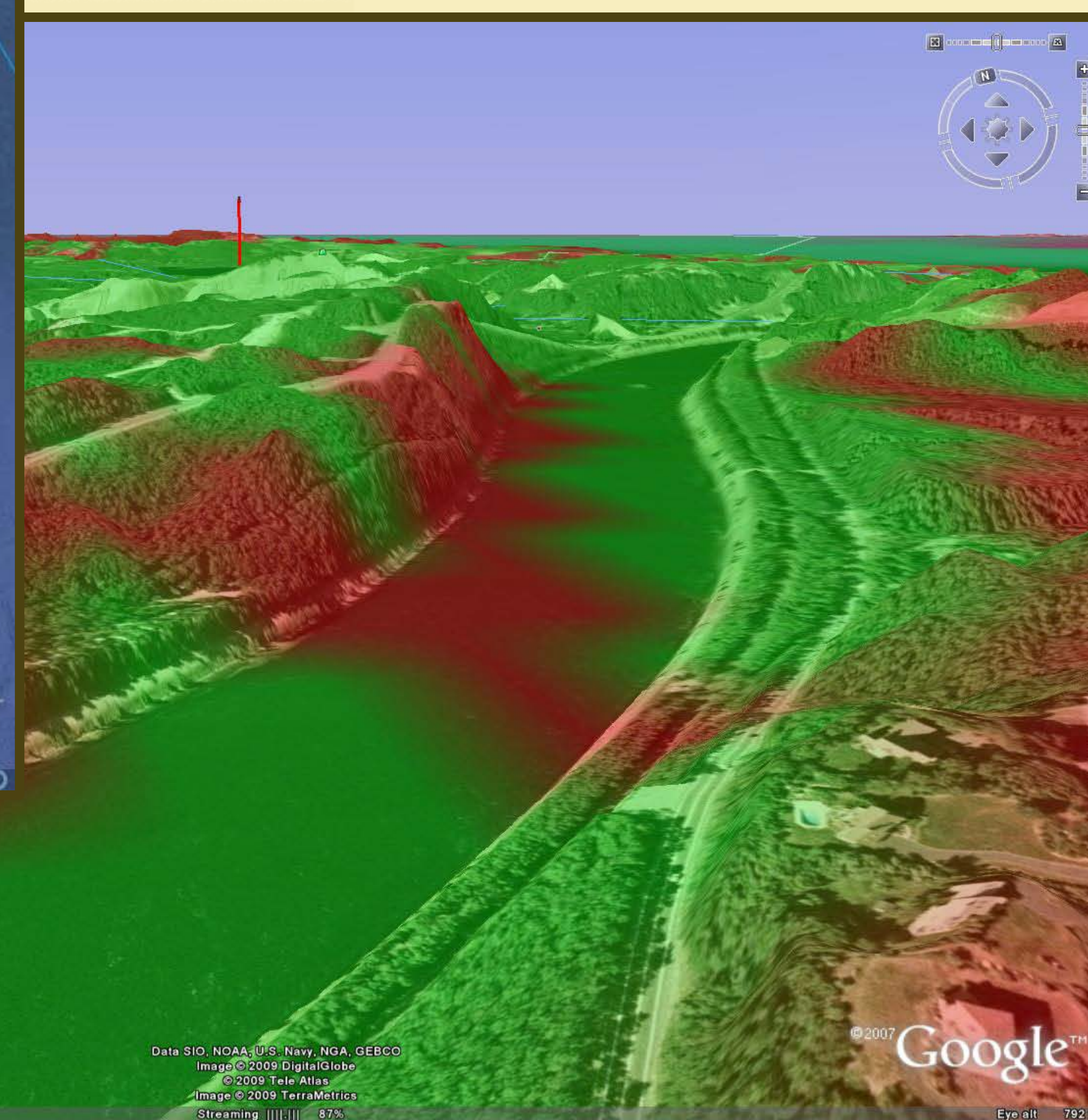


Test Information Tab - Modify Existing Test

RFF Data Downloaded as KML (Viewed in Google Earth)



3D Analysis in Google Earth



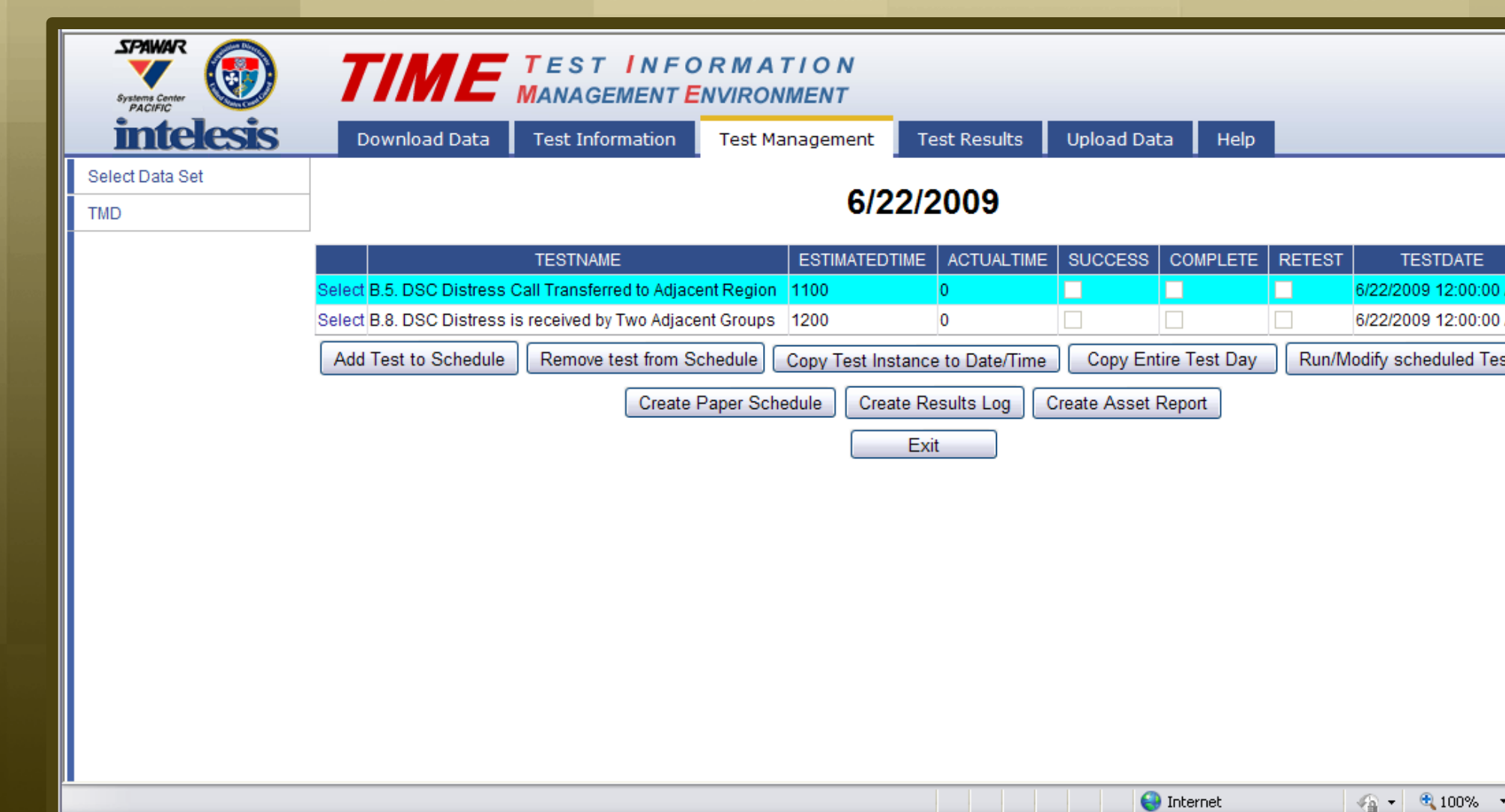
**What is TIME?**

The Test Information Management Environment is a web-enabled, secure environment for the entry, storage, recall, analysis and reporting of test procedures and test information for hardware, software or systems. It currently stores Rescue-21 test data for remote fixed facilities (RFFs) around the United States.

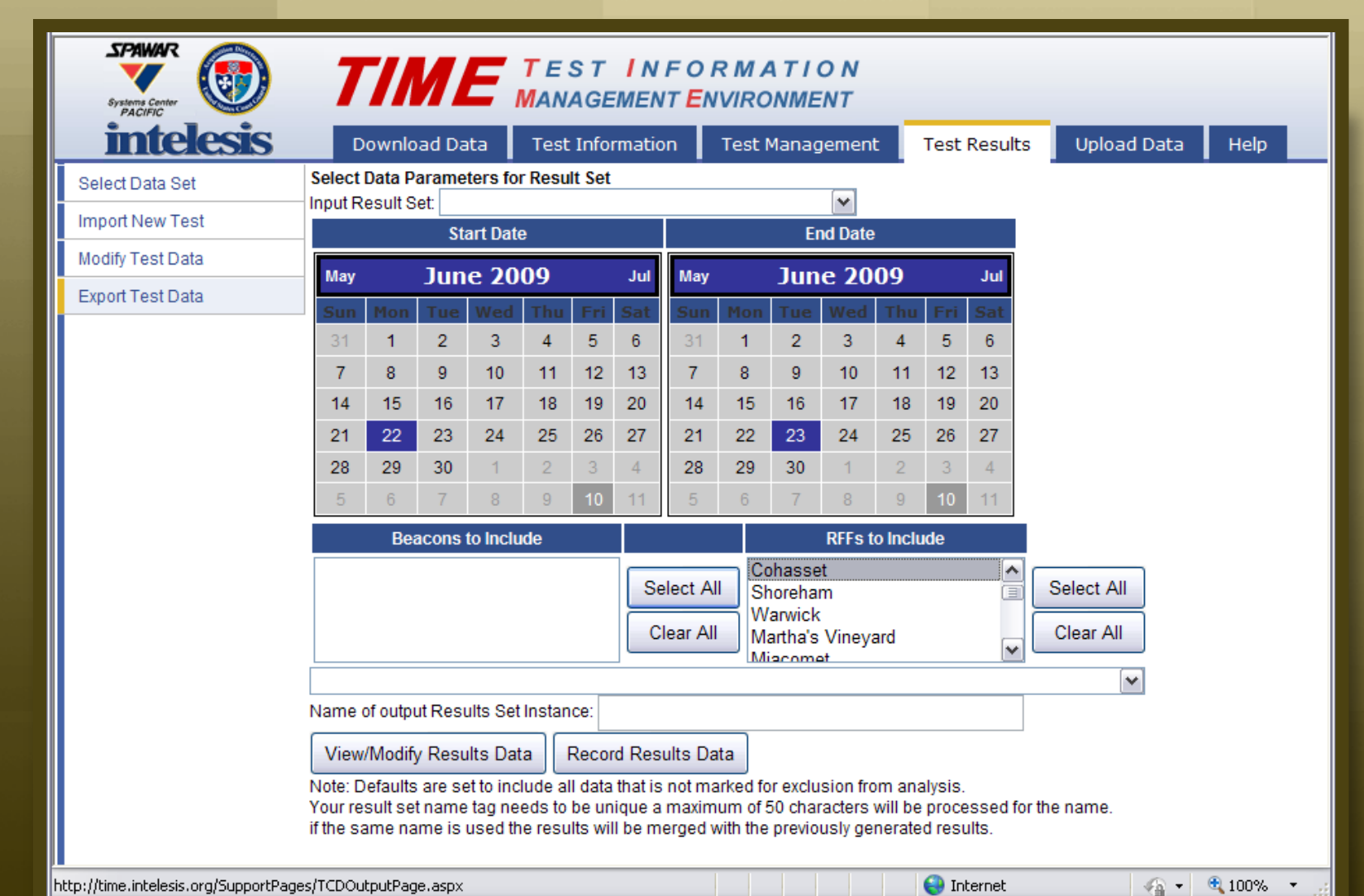
**What does TIME do?**

- ✓ Establishes a secure, central repository for test information
- ✓ Provides near-real-time access to test data and analysis
- ✓ Supports repeatable T&E processes
- ✓ Allows comparison of test data over time for the same location
- ✓ Generates outputs in numerous formats (including GIS)

Test Management – Test Schedule for the Day



Test Results Tab – Export Test Data





## Major Benefits

Web-based, yet secure and easy to use

- ✓ Uses Role-Based Security access controls
- ✓ Tailorable Roles, access levels set by USCG

Near-real-time test information analysis and review

- ✓ Rapid, global, instant updating capability.
- ✓ Provides enhanced review capability of newly generated data.
- ✓ Enables comparison of new data to historical data, presented over time.

Full Data Warehouse capability

- ✓ Simultaneous support for multiple projects, systems.
- ✓ Automatically integrates collected test event data & information (Pass/Fail, FRACS, MOE, MOS, MOP, etc.).
- ✓ Expandable, extensible, scalable, and tailorable.

Extended analysis capabilities

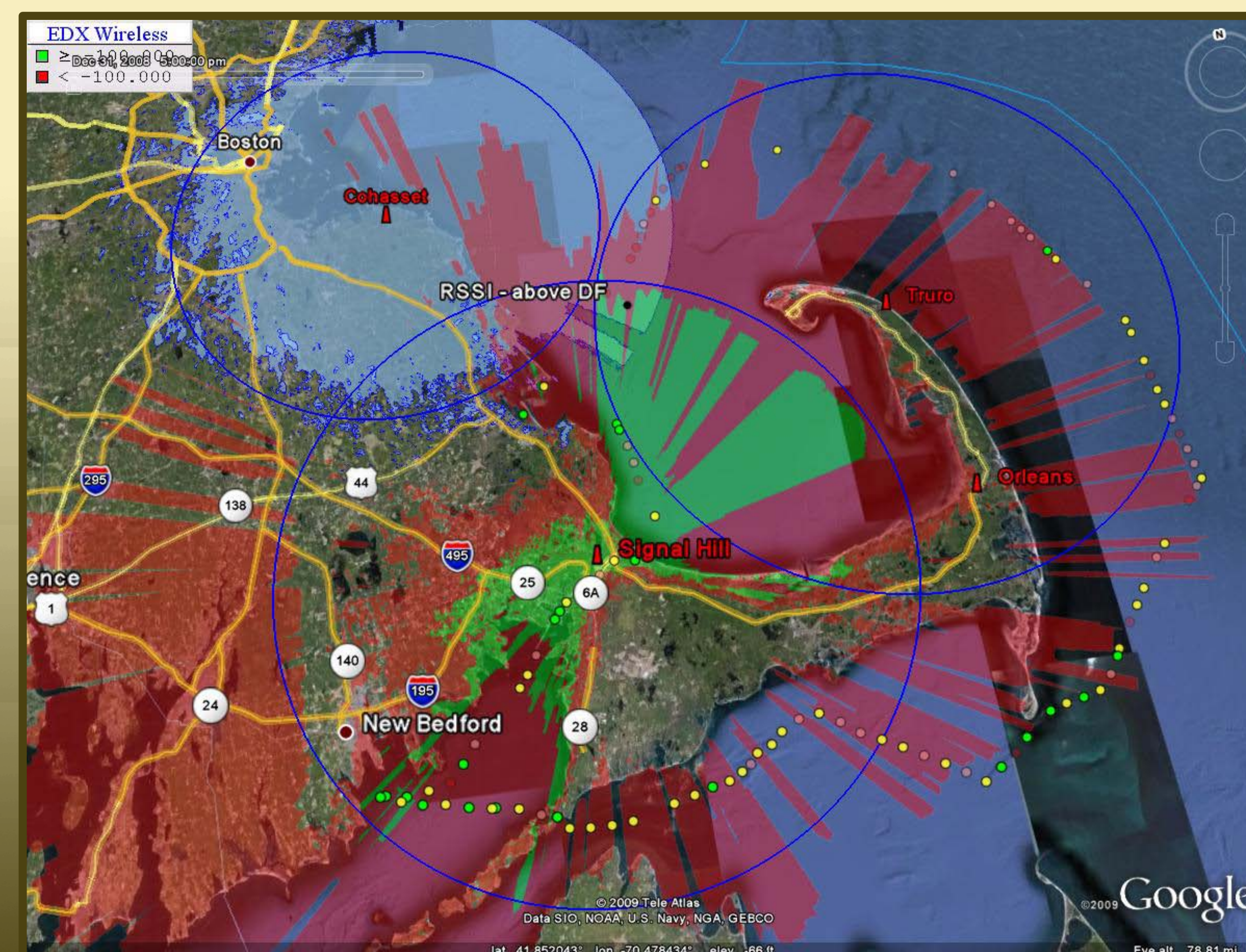
- ✓ Stores and integrates data from other applications (EDX, AREPS, etc).
- ✓ 3D/spatial analysis of collected test data immediately identifies potential causes of poor/lost VHF communication.
- ✓ Visualize how selected data/performance changes/has changed over time.

Provides a “repeatable” T&E Process for USCG Programs

- ✓ Complies with COMOPTEVFOR requirements.
- ✓ Supports any test environment (DT, FQT, SIT, OT&E, Vessel Coverage Tests).
- ✓ Rapid and uncomplicated test generation (T-MIR service).

## Capabilities/User Features

- ✓ Secure, on-line connectivity using Secure Socket Layer (SSL) Internet Protocol for testing coordination and display of test results.
- ✓ Supports all T&E phases: development, system, operational, follow-on
- ✓ Automated trend analysis and reporting capabilities for timely generation of test reports
- ✓ Supports large number of test observers, participants and events
- ✓ Flexible on-line data collection, storage, centralization and integration, trend analysis, reporting, remote access to test results
- ✓ Ensures testing traceability by capturing all test events and data histories into a single, central, data warehouse
- ✓ Easily “tailored” to meet unique test or program requirements



GIS Layers – overhead view of EDX propagation analysis

## What Does TIME Do Again?

TIME ensures traceability

- ✓ Captures all project events and data history in a single, centralized data warehouse to manage and store data for each project.
- ✓ Data is traceable to event, location, date, etc.

TIME is cost-effective

- ✓ The TIME application is non-proprietary, and commercial license free.
- ✓ The only commercial license required is for the Microsoft database server.
- ✓ Requires minimal hardware, infrastructure

TIME meets technical development standards

- ✓ Service Oriented Architecture (SOA) compliant
- ✓ No user-installed software or hardware required.
- ✓ Outputs/Reports are industry-standard formats (e.g., KML).
- ✓ Scenarios, Tests, and Steps are integrated with MOEs (Measures of Effectiveness), MOSs (Measures of Suitability), MOPs (Measures of Performance).

### Intelesis Technologies

9666 Business Park Ave. Suite 110  
San Diego, CA. 92131

Office: (858) 856-7461

FAX: (858) 856-7319

rob.jenks@intelesistech.com